

ROTATING VANE ANEMOMETERS MODELS RVA501 AND RVA801

Model RVA501

Model RVA501 is a handheld digital Rotating Vane Anemometer used for air velocity and volumetric flow measurements.

Model RVA801

Model RVA801 is a lightweight, robust, and simple to use Rotating Vane Anemometer that provides accurate and reliable readings every time. Ideal for HVAC commissioning at grilles, filters, and kitchen exhausts; the RVA801 displays readings in metric or imperial mode.

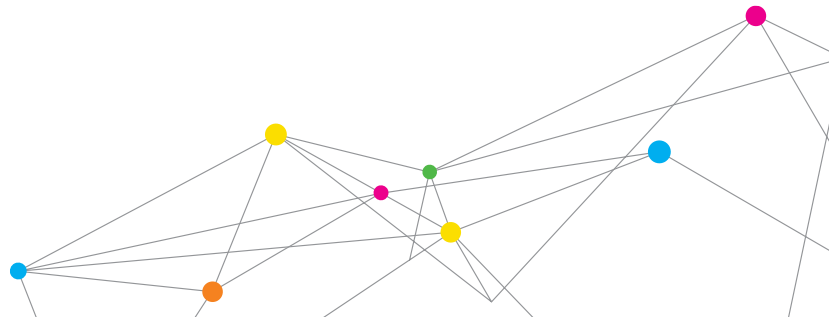


Features and Benefits (Model RVA801)

- + Reversible 4-in. (100-mm) head allows readings at supply and exhaust grilles
- + Calculates volumetric flow rate
- + Compatible with Aircone Flow Hoods
- + No density correction factors required
- + Automatic averaging of air velocity

Features and Benefits (Model RVA501)

- + Measures velocity and temperature
- + Calculates flow
- + Simultaneous display of up to three measurements
- + Log, store, and recall data
- + Download data to a PC
- + Optional telescopic probe available
- + Compatible with Aircone Flow Hoods



SPECIFICATIONS

ROTATING VANE ANEMOMETERS MODELS RVA501 AND RVA801

Velocity

Range 50 to 6,000 ft/min (0.25 to 30 m/s)
Accuracy $\pm 1.0\%$ of reading ± 4 ft/min (± 0.02 m/s)

Area Size Input

Range
RVA501 0 to 500 ft² (0 to 46.45 m²)
RVA801 0.043 to 900 ft² (0.00399 to 90 m²)

Volumetric Flow Rate

Range Actual range is a function of velocity and area

Temperature

Range 40 to 113°F (5 to 45°C)
Accuracy $\pm 2.0^\circ\text{F}$ ($\pm 1.0^\circ\text{C}$)
Resolution RVA501 0.1°F (0.1°C)
Resolution RVA801 1°F (0.1°C)

Instrument Temperature Range

Operating (Electronics) 40 to 113°F (5 to 45°C)
Storage -4 to 140°F (-20 to 60°C)

Data Storage Capabilities (RVA501 only)

Range 12,700+ samples and 100 test IDs

Logging Interval (RVA501 only)

From 1 second to 1 hour

Time Constant (RVA501 only)

User selectable

External Meter Dimensions

RVA501 3.3 in. x 7.0 in. x 1.8 in.
(8.4 cm x 17.8 cm x 4.4 cm)
RVA801 4.5 in. x 11 in. x 2.6 in.
(1.2 cm x 28 cm x 6.5 cm)

Meter Weight with Batteries

RVA801 11.6 oz. (329 g)
RVA501 0.6 lbs. (0.27 kg)

Power Requirements

RVA801 9-volt battery
RVA501 Four AA-size batteries or AC adapter

AIRCONE FLOW HOODS

Aircone Flow Hoods are a fast and accurate method of maximizing the usefulness of your 4-in. (100 mm) rotating vane anemometers. For a modest investment, you can enhance the capability of your rotating vane, turning it into an air volume flow balancing tool.



Features and Benefits

- + Rectangular and circular cones available
- + Measures volumetric flow at small grilles and diffusers
- + Reads air volume quickly and accurately

Specifications

Aircone Flow Hoods (P/N 801750)

Range (with RVA501 or RVA801)

0 to 210 cfm (0 to 100 l/s, 0 to 360 m³/h)

Size

Rectangular Hood 11.2 in. x 9.2 in. (285 mm x 235 mm)
Round Hood 7.1 in. (180 mm) diameter

Weight (includes case)

2.4 lbs (1.1 kg)

	RVA801	RVA501
Temperature	+	+
Velocity	+	+
4-in. (100-mm) reversible head	+	+
Flow	+	+
Telescoping handle (optional)		+
Data logging, recall, review, download		+
Use with Aircone flow hoods	+	+
Certificate of Calibration	+	+

Alnor, TSI, and the TSI logo are registered trademarks of TSI Incorporated.

Specifications subject to change without notice.

Distributed by:
Valuetesters.com
sales@valuetesters.com

Tel: 602-795-8292, Fax: 602-795-4624



Alnor Products, TSI Incorporated

Visit our website at www.alnor.com for more information.

USA India Tel: +1 800 874 2811 Tel: +91 80 67877200
China Singapore Tel: +86 10 8219 7688 Tel: +65 6595 6388