

# DP-CALC™ MICROMANOMETERS MODELS 5815 AND 5825



The DP-Calc 5815 and 5825 micromanometers allow you to easily make HVAC pressure measurements. These robust instruments can be used with Pitot probes to measure duct velocity. The DP-Calc 5815 is a simple to operate, hand held digital micromanometer for fast, accurate differential and static pressure measurements. The high performance DP-Calc 5825 can calculate flow and has data logging capabilities.

## Applications

- + HVAC commissioning and troubleshooting
- + Testing and balancing
- + Pitot tube duct traverses
- + Static pressure measurements
- + Pressure drop across filters, coils, fans, and diffusers
- + Environmental air flow testing

## Features and Benefits

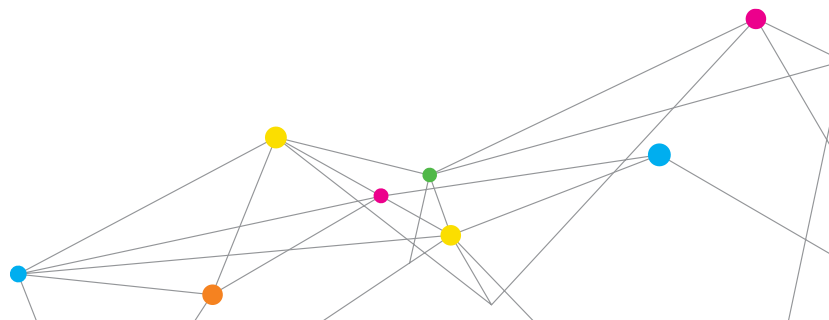
- + Measure differential and static pressure from -15 to +15 in. H<sub>2</sub>O (-3735 to +3735 Pa)
- + Calculate and display velocity when using a Pitot tube

## Added Features Model 5825

- + Calculates flow
- + Variable time constant
- + Statistics
- + Data logging with time and date stamp
- + Stores 12,700+ samples and 100 test IDs
- + Includes LogDat2™ downloading software
- + Programmable K factors



UNDERSTANDING, ACCELERATED



# SPECIFICATIONS

## DP-CALC™ MICROMANOMETERS MODELS 5815 AND 5825

### Static/Differential Pressure

|                    |  |
|--------------------|--|
| Range <sup>1</sup> | -15 to +15 in. H <sub>2</sub> O<br>(-28.0 to +28.0 mm Hg, -3735 to +3735 Pa) |
| Accuracy           | ±1% of reading ±0.005 in. H <sub>2</sub> O<br>(±0.01 mm Hg, ±1 Pa)           |
| Resolution         | 0.001 in. H <sub>2</sub> O (0.1 Pa, 0.01 mm Hg)                              |

### Velocity (Pitot Tube)

|                       |   |
|-----------------------|---|
| Range <sup>2</sup>    | 250 to 15,500 ft/min (1.27 to 78.7 m/s) |
| Accuracy <sup>3</sup> | ±1.5% at 2,000 ft/min (10.16 m/s)       |
| Resolution            | 1 ft/min (0.1 m/s)                      |

### Duct Size (5825)

1 to 500 inches in increments of 0.1 in.  
(2.5 to 1270 cm in increments of 0.1 cm)

### Volumetric Flow Rate (5825)

|       |  |
|-------|--|
| Range | Actual range is a function of velocity,<br>pressure, duct size, and K factor |
|-------|--|

### Instrument Temperature Range

|           |                           |
|-----------|---------------------------|
| Operating | 40 to 113°F (5 to 45°C)   |
| Storage   | -4 to 140°F (-20 to 60°C) |

### Data Storage Capabilities (5825)

|       |                                  |
|-------|----------------------------------|
| Range | 12,700+ samples and 100 test IDs |
|-------|----------------------------------|

### Logging Interval (5825)

1 second to 1 hour

### Time Constant (5825)

User selectable

### External Meter Dimensions

3.3 in. x 7.0 in. x 1.8 in. (8.4 cm x 17.8 cm x 4.4 cm)

### Meter Weight with Batteries

0.6 lbs. (0.27 kg)

### Power Requirements

Four AA-size batteries (5815)  
Four AA-size batteries or optional AC adapter (5825)

<sup>1</sup>Overpressure range = 190 in. H<sub>2</sub>O (7 psi, 360 mmHg, 48 kPa).

<sup>2</sup>Pressure velocity measurements are not recommended below 1,000 ft/min (5 m/s).

<sup>3</sup>Accuracy is a function of converting pressure to velocity. Conversion accuracy improves when actual pressure values increase.

Specifications are subject to change without notice.

DP-Calc is a trademark, and TSI and the TSI logo are registered trademarks of TSI Incorporated.

|                                  | 5815 | 5825 |
|----------------------------------|------|------|
| Differential and static pressure | +    | +    |
| Velocity with pitot tube         | +    | +    |
| Sample statistics                |      | +    |
| Volumetric flow rate             |      | +    |
| Actual and standard velocity     |      | +    |
| Variable time constant           |      | +    |
| LogDat2 downloading software     |      | +    |
| K factor                         |      | +    |
| Certificate of Calibration       | +    | +    |

Distributed by:  
  
[sales@valuetesters.com](mailto:sales@valuetesters.com)  
 Tel: 602-795-8292, Fax: 602-795-4624



UNDERSTANDING, ACCELERATED

TSI Incorporated - Visit our website [www.tsi.com](http://www.tsi.com) for more information.

|                |                               |                  |                              |
|----------------|-------------------------------|------------------|------------------------------|
| <b>USA</b>     | <b>Tel:</b> +1 800 874 2811   | <b>India</b>     | <b>Tel:</b> +91 80 67877200  |
| <b>UK</b>      | <b>Tel:</b> +44 149 4 459200  | <b>China</b>     | <b>Tel:</b> +86 10 8251 6588 |
| <b>France</b>  | <b>Tel:</b> +33 4 91 11 87 64 | <b>Singapore</b> | <b>Tel:</b> +65 6595 6388    |
| <b>Germany</b> | <b>Tel:</b> +49 241 523030    |                  |                              |