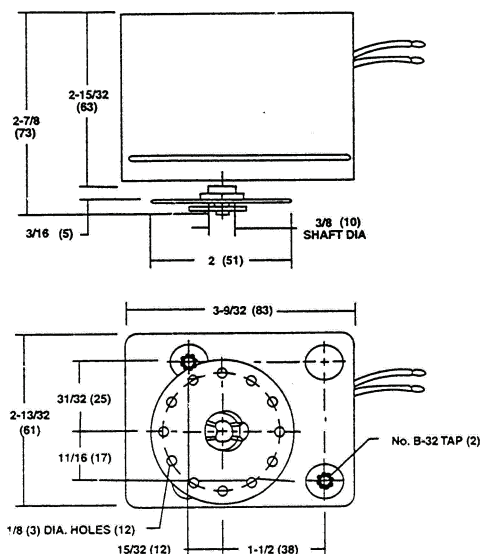


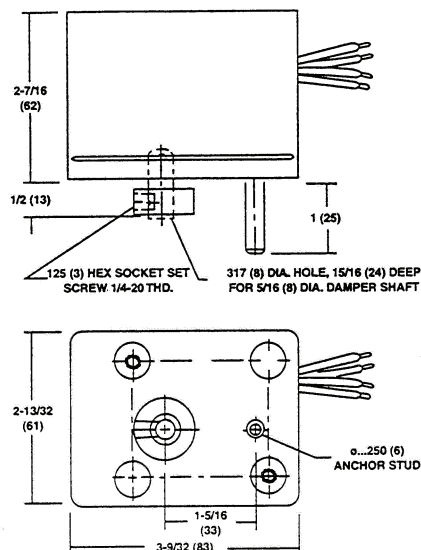
453L, 453H, 453R

Schneider Electric Erie™ Damper Operators

Dimensions



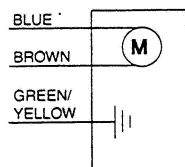
Linkage Drive



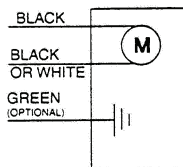
Direct Drive

Wiring

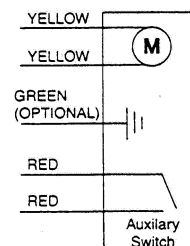
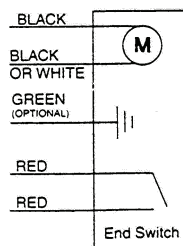
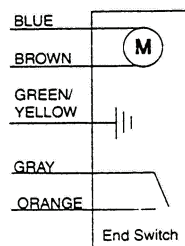
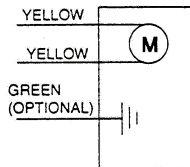
“L & H” Cordset Round



“L” Wire Leads



“H” Wire Leads



Motor: 24V, 120V, 230V, 277V.

Rating:

453L, 7VA.

453H, 9VA.

Auxiliary Switch: SPDT Normally open or normally closed.

Rating: 10 Amp @ 277 Vac, 1/2 HP @ 250Vac.

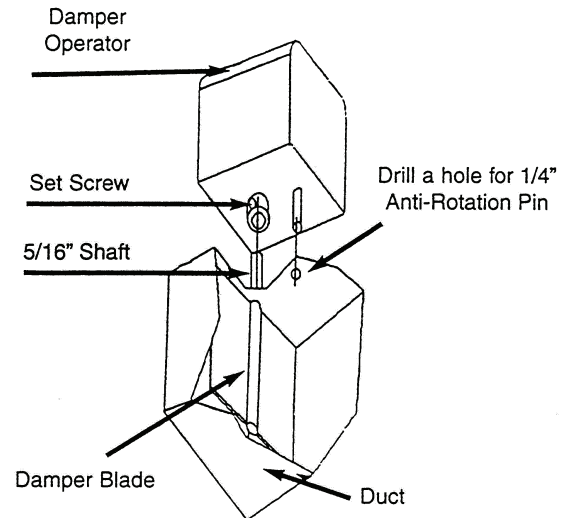
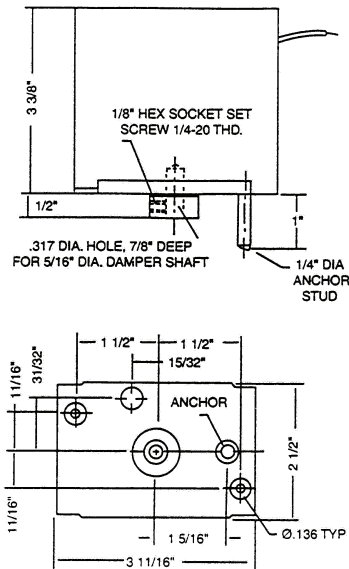
Life Is On

Schneider
Electric

Be sure to connect provided ground screw or wire. The product must be installed to an approved termination such as a junction box.

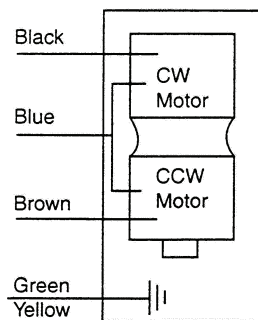
453R Two Position, Motor Open, Motor Closed Schneider Electric Erie Damper Actuators

Dimensions

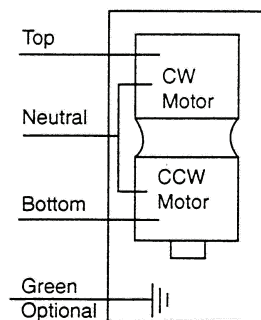


Wiring

"R" with Cordset Round



"R" Wire Leads



All specifications are nominal and conform to generally acceptable industry standards. Schneider Electric is not responsible for damages resulting from mis-application or mis-use of its products. When installing product, follow local electrical codes.

Specifications

Motor: 24V, 120V, 230V, 277V.

Rating:
453R, 7VA.

Wire Leads:

Clockwise rotation, Two leads from top motor.

Counterclockwise rotation, Two leads from bottom motor.

With Cordset:

Black and blue leads, Clockwise rotation.

Brown and blue leads, Counterclockwise rotation.