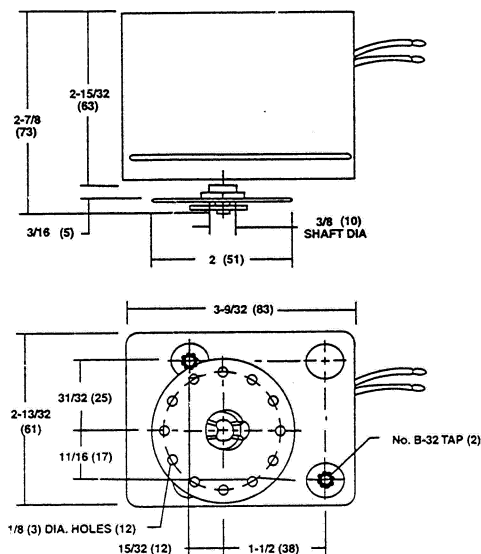


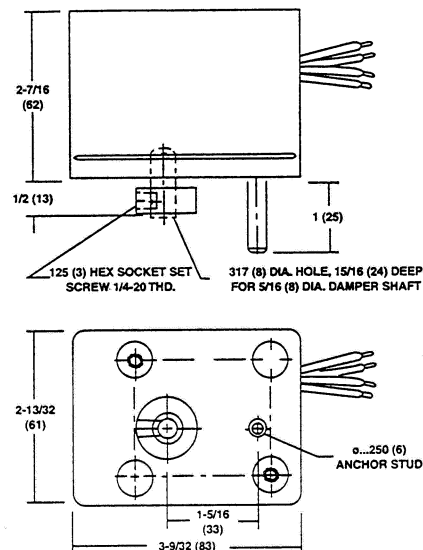
Schneider Electric Erie™ Damper Operators Installation Instructions

453L & 453H Two Position, Motor Open, Schneider Electric Erie Spring Return Damper Actuators

Dimensions



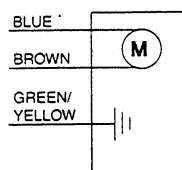
Linkage Drive



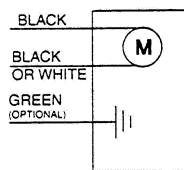
Direct Drive Specifications

Wiring

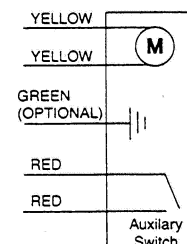
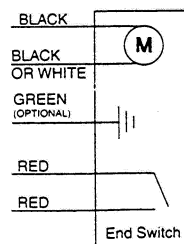
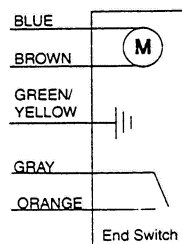
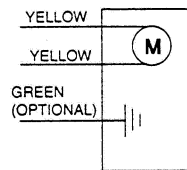
"L & H" Cordset Round



“L” Wire Leads



“H” Wire Leads



Motor: 24V, 120V, 230V, 277V.

Rating:

453L, 7VA.

453H, 9VA.

Auxiliary Switch: SPDT Normally open or normally closed.

Rating: 10 Amp @ 277 Vac, 1/2 HP @ 250Vac.

