



FAMILY OF PRODUCTS

- ▶ Cable Verification & Tracing Analyzer
- ▶ Clamp-On Meters
- ▶ Current Measurement Probes
- ▶ Data Loggers
- ▶ Digital Multimeters
- ▶ Electrical Test Tools
- ▶ Environmental Testers
- ▶ Ground Resistance Testers
- ▶ Leakage Current Meters & Probes
- ▶ Megohmmeters
- ▶ Micro-Ohmmeters
- ▶ Oscilloscopes
- ▶ Power Quality / Energy Analyzers, Meters & Loggers
- ▶ Test and Measurement (Lab) Instruments
- ▶ Thermal Imaging Cameras
- ▶ Transformer Ratiometers

AEMC[®]
INSTRUMENTS
CHAIVIN ARNOUX GROUP

Find Quality Products Online at:

 **Valuetesters.com**

info@valuetesters.com

Cable Verification & Tracing Analyzer

Efficiency—One Instrument for the Job!

The Cable Verification & Tracing Analyzer Model 6683 quickly locates, identifies, and diagnoses electrical wiring, data cables, and metal pipes — even when buried or hidden in walls.

Its transmitter-receiver system combines precision detection, safety, and digital filtering for fast, reliable troubleshooting.

Key Features

- Detects open circuits and interruptions
- Locates cables in walls, ceilings, or underground
- Identifies presence of voltage via NCV (non-contact voltage)
- Works in energized or de-energized systems
- Provides real-time feedback via LCD and audible tone and more...

Applications

Data Center & Telecom

- Trace and identify power and communication lines in cable trays
- Locate faults or breaks in network and control wiring
- Verify circuit continuity and connection points for rack equipment
- Detect energized or de-energized cables before maintenance or rerouting
- Distinguish multiple conductors using multiple transmitter ID codes

Electrical

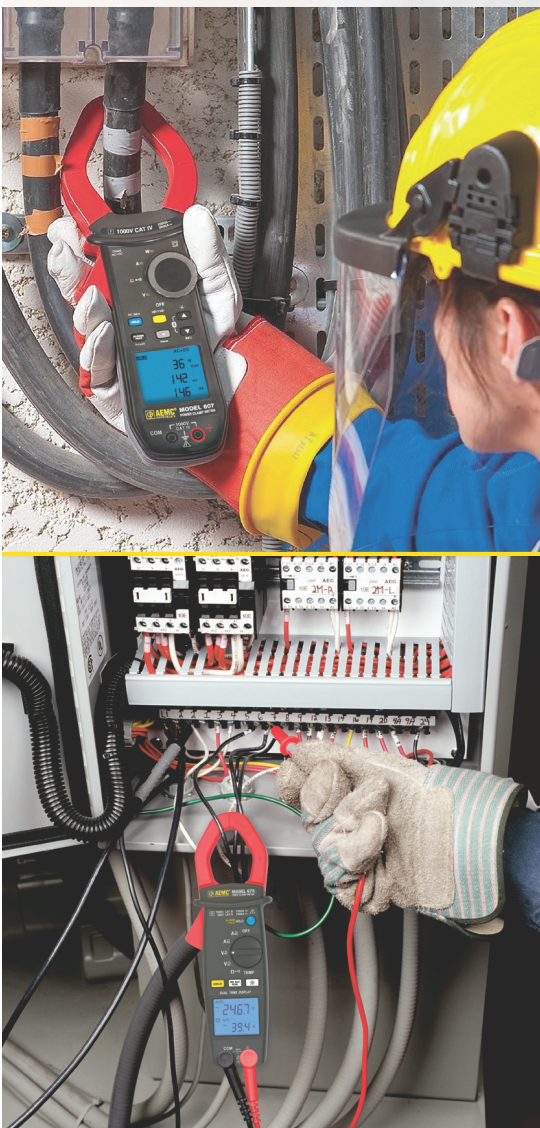
- Identify fuses and circuit breakers
- Trace cables concealed in walls or ceilings
- Locate outlets wired in parallel on branch circuits
- Locate hidden junction boxes behind wall coverings

Plumbing & Heating

- Locate metallic pipes (copper, steel)
- Trace non-metallic pipes by inserting a single-conductor cable from one accessible end



MODEL 6683



Clamp-On Meters

DataView®  

AEMC® Instruments proudly presents rugged, dependable, and safe clamp-on meters. Leveraging cutting-edge technology, these meters guarantee top-notch quality while ensuring user-friendly simplicity. Experience the advantage of swift delivery within just one week for in-stock items. Elevate your measurements with AEMC® Instruments — *where innovation meets efficiency!*

Safety

Our clamp-on meters are designed, manufactured and tested to IEC/EN 61010 and 2-032, 600 V, 1000 V, CAT II, III and IV standards (model dependent).

Feature Rich Clamp-On Meters

AEMC® Instruments Clamp-On Meters feature simple, one-hand operation for measuring A_{AC} , A_{DC} , V_{AC} , resistance, continuity, frequency, TRMS, %THD, CF, peak, and other parameters. They also perform diode checks. Our power clamp-on meters functions include AC, DC and AC+DC volts, amps and power, True InRush®, power measurements, harmonic analysis, data logging, and more (model dependent).

Applications (model dependent)

- 1000 V CAT IV rated
- UL 94 IV flame retardant self-extinguishing
- IP54 rated
- True InRush® and True RMS models
- Measures up to 1000 V_{AC} (1400 V peak); (1000 V_{DC} and AC+DC with resolution to 10 mV)
- Measures up to 2000 A_{AC} and 3000 A_{DC}
- Measures single- and three-phase power (real, reactive, and apparent) up to 3 MW with resolution to 1 W
- VA, VAR, KW measurements
- Phase rotation
- Auto selects AC or DC measurement
- Models available with wireless communication to PC or smart device
- Models capable of Power Values and Energy Values
- High speed, 1ms Peak capture models and more...



(See website for all models)



MODEL CM605



MODEL 514



MODELS 407 & 607



MODELS 404 & 606

Current Probes

Discover unparalleled measurement accuracy with AEMC® Instruments, the global leader in current probes. Explore a comprehensive range of models capable of precisely measuring currents from low μA to kA. Tailor your experience with a diverse selection of configurations and jaw sizes. Choose from a variety of cutting-edge probe types, including Iron Core, Nickel Core, Hall Effect, Flux Gate, and Rogowski. Elevate your measurement capabilities with AEMC® Instruments – *your gateway to precision and versatility.*

Safety

Our current probes are designed, manufactured and tested to meet the latest safety and measurement standards (IEC EN 61010/EN 61010-1/NF EN 61010-2-30, (300, 600, 1000) V, CAT III and CAT IV).

Easy Interface Options

Standard and customized output options provide easy interface to data loggers, meters, oscilloscopes, control systems, and more.

Key Features (model dependent)

- Measure up to 30,000 A_{AC} and 5000 A_{DC}
- Measure current without interrupting the circuit
- Extend the measuring capabilities of DMMs, recorders, power meters and loggers

Custom Probes

We offer custom probes to meet your application. Just let us know your specific needs! To get started, go to our website www.aemc.com, click on the *Support* tab and fill out the *Customer Service* form.



MINIFLEX® 14"
MODEL MA114



AC/DC CURRENT PROBE
MODEL MR526
(BANANA CONNECTOR)



MINIFLEX® FLEXIBLE
SENSORS



AC/DC CURRENT PROBE
MODEL MR417
(BNC CONNECTOR)



DC/AC MICROPROBE
MODEL K110



AC CURRENT PROBE
MODEL MN01



AC/DC CURRENT PROBE
MODEL MH60



AC CURRENT PROBE
MODEL MN373



AMPFLEX® FLEXIBLE
SENSORS



(Many more models available!
See website for all models)

Data Loggers

DataView®  

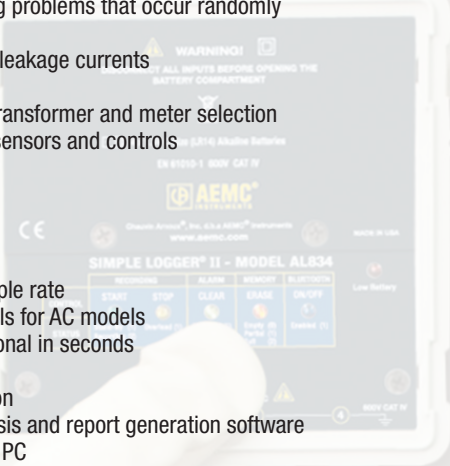
Experience versatility, power, and cost-effectiveness with AEMC® Instruments cutting-edge data loggers. Our range includes single, dual, four, and eight-channel options, catering to diverse applications, both general and specialized. Monitor parameters such as temperature, humidity, voltage, thermocouple, and events seamlessly. Our models come equipped with DataView® software for in-depth analysis and reporting of recorded data. Additionally, select models offer the convenience of remote access via the internet, providing you with unparalleled control and convenience. Elevate your data monitoring experience with AEMC® Instruments – *where innovation meets efficiency!*

AEMC® Instruments Data Loggers Measure a Wide Variety of Applications

- Assists electricians and engineers in finding problems that occur randomly in fault/intermittent current detection
- Neutral current monitoring finds unwanted leakage currents
- Harmonic real-time current monitoring
- Load profiling which size loads for proper transformer and meter selection
- Process loops monitoring – finds troubled sensors and controls
- HVAC and general temperature and more...

Key Features (model dependent)

- Programmable storage modes and rates
- Automatically adjusts scale range and sample rate
- Accurate representation of measured signals for AC models
- Easily installed anywhere quickly – operational in seconds
- Compact and runs on alkaline batteries
- Wireless (Bluetooth®) or USB communication
- Comprehensive DataView® graphing, analysis and report generation software
- Display and analyze real-time data on your PC
- Stores over 240,000 measurements ensuring no valuable data is missed with more than 8 hours at 8 samples per second
- Dedicated models for: Thermocouple, Event, Humidity, 4 to 20 mA, V_{DC}, A_{AC} and V_{AC} inputs
- Compatible current probes and accessories and more...



MODEL L261



MODEL L452



MODEL DL914



(See website
for all models)



Find Quality Products Online at:



info@valuetesters.com

Digital Multimeters

SX-DMM   

Unleash the power of precision with AEMC® Instruments lineup of hand-held digital multimeters. Crafted for convenience, these compact devices boast simplicity, accuracy, and the assurance of being designed and tested by electrical engineers with unparalleled expertise in safety. Improve your troubleshooting experience with time-saving features that empower you to confidently tackle and solve problems. Trust in AEMC® Instruments for tools that go beyond expectations, ensuring efficiency and reliability in every electrical endeavor.

Key Features (model dependent)

- Determine cable runs in wall, conduit and other surfaces
- Can test up to 1000 V and 20 A
- Functions include: V_{AC}, V_{DC}, A_{AC}, A_{DC}, Hz, Resistance, Continuity, Capacitance, Diode Check and Temp
- Models range from basic 4000 count instruments to high accuracy 100,000 count displays
- Easy-to-read graphical display of trends and multiple parameters
- Trace cursors and zoom on recordings
- Advanced features including Wi-Fi and Bluetooth® communication, data logging, and non-contact voltage detection are available in many models
- For more demanding applications, intrinsically safe, waterproof and ATEX models are available and more...



MODEL OX 5042B

Three Measuring Instruments in one!
(Digital Multimeter, 2-Channel Oscilloscope, and Harmonic Analyzer)



MODEL MTX 3292B



MODEL 5233



(See website for all models)

Electrical Test Tools

Revolutionize your toolkit with our budget-friendly phase/motor rotation meters, line splitters, and voltage/outlet testers. Our range features both contact and non-contact measurement options, providing versatility for every electrician's needs. Elevate your electrical diagnostics with essential tools designed to enhance efficiency and accuracy. Upgrade your tool bag essentials today and ensure you're equipped for success on every job.

Key Features

► Voltage Absence Testers

- Measure up to 1000 V_{AC} and 1400 V_{DC} (VAT) and 275 kV (HVD)
- Full Autotest with indication of the type of fault
- IP65 protection for indoor and outdoor use
- Automatic standby
- Audio and visual continuity

► Phase & Motor Rotation Meters

- Identify phase rotation on 3-phase systems, live and open/de-energized phases
- Ideal for measuring the proper rotation of motors, conveyors, pumps and other electrical devices interconnected to the power line system



VOLTAGE ABSENCE TESTER
MODEL CA 771

PHASE ROTATION METER
MODELS 6611 & 6612

NON-CONTACT
HIGH VOLTAGE DETECTOR
MODEL 275HVD



(See website for all models)

Environmental Testers

DataView®   

Explore our comprehensive range of premium hand-held environmental test instruments, meticulously crafted for ease of use and unparalleled accuracy. Designed with ergonomic excellence, our models seamlessly perform multiple tasks, all while being battery-operated and featuring a digital display with backlighting. Elevate your workplace environmental analysis and planning with instruments that set the standard for quality and functionality. Invest in the best – *choose reliability, choose excellence, choose success with our cutting-edge environmental test instruments.*

- Measure: light, sound, temperature/humidity, and temperature via thermocouple and infrared
- Unique mapping feature for light, wind and air flow measurements and assist in building health compliance to OSHA standards
- Data logging capability with data analysis and report generation software included
- Visual CO₂ alarm feature warns of unsafe CO₂ levels
- Wireless communication with our Thermal Imaging Camera Model 1954

Key Features (model dependent)

- Compact and lightweight
- Simple-to-use
- Hand-held or wall mountable
- Data logging
- User programmable
- USB and Bluetooth® communication
- Analysis/Report generating DataView® software



LIGHTMETER
MODEL CA811



SOUND LEVEL METER
MODEL CA832



AIR QUALITY LOGGER
MODEL 1510



THERMOCOUPLE THERMOMETER
DATA LOGGER MODEL 1822



(See website for all models)



Ground Resistance Testers

DataView®  

Empower your electrical infrastructure with AEMC® Instruments state-of-the-art Ground Resistance Testers. We recognize the critical importance of accurate ground resistance measurement to prevent costly downtime from service interruptions caused by poor grounds. That's why we present one of the most extensive and user-friendly selections of ground resistance testers in the industry.

Pioneers of Innovation

As trailblazers in the field, we pioneered the use of clamp-on ground resistance testing and continually enhance our instruments' features to ensure they stand as the epitome of quality, comprehensiveness, and simplicity. Count on AEMC® Instruments ground resistance testers for the highest standards in ensuring ground integrity.

Unrivaled Capabilities

Witness groundbreaking capabilities with our exclusive ground tester models, such as the GroundFlex® Field Kit (Models 6472 and 6474), designed to test energized transmission towers without disconnecting the overhead ground conductor. With a wide measurement range from 0.01 Ω to 99.99 k Ω , our testers cater to various needs, whether it's a simple point-to-point test, clamp-on ground resistance test, soil resistivity test, or a comprehensive 3- or 4-Point Fall-of-Potential test.

Widest Selection, Unmatched Quality

AEMC® Instruments provides hand-held and hard case test instruments, ensuring you have the right tool for your application. Our commitment to excellence extends to offering private seminars and demonstrations led by our own certified technical trainer, Gregg Wong, who is well-versed in various grounding standards and codes, ensuring you confidently grasp proper sizing and testing of grounding systems. Elevate your ground resistance testing experience with AEMC® Instruments – *where innovation meets reliability, and your success is our priority.*



MODELS 6416, 6417, 6418

Our revolutionary Clamp-On Ground Resistance Testers will save you time and money with the ability to measure resistance without disconnecting the ground system!



MODELS 4620 AND 4630



MODELS 6422 AND 6424



Kit includes the GroundFlex® Adapter Model 6474 and Model 6472. The ONLY system on the market capable of testing ground resistance of individual power transmission tower legs!



(See website for all models)

GROUND FLEX® FIELD KIT MODEL 6474



Find Quality Products Online at:



info@valuetesters.com

Leakage Current Meters & Probes

Clamp-on Leakage Current Meter

- Measure leakage current down to 1 μ A
- Can be used as a standard clamp-on meter measuring to 60 Arms, as well as V_{AC} and V_{DC} ranges, resistance and continuity with a buzzer
- Ergonomic in design and fits well in the hand
- Compact jaw can accommodate the most common conductors up to 0.91 in (23 mm) in diameter

Leakage Current Probe

- Measure leakage current shunted to ground caused by insulation faults
- Locate failures when they occur, or anticipate them before they occur, without shutting down equipment or spending hours troubleshooting
- Quickly measure load imbalance
- Designed specifically for locating low current faults on high current loads
- Sensitive nickel alloy AC current transformer detector capable of measuring differential or leakage current as low as 500 μ A, and may be used to measure current up to 400 A continuous duty
- Provide two output ranges: 1 mV/mA_{AC} or 1 mV/A_{AC}
- 4 inch jaw opening and range of 500 μ A to 200 A



CLAMP-ON LEAKAGE
CURRENT METER MODEL 566



LEAKAGE CURRENT
PROBE MODEL 2620



Megohmmeters

DataView®

Ensure the longevity of your equipment and safeguard against unplanned shutdowns with AEMC® Instruments comprehensive range of Megohmmeters. We understand the critical need for accurate assessment of insulation on wire and motor windings to prevent damage to valuable equipment and ensure personal safety. That's why our Megohmmeters are designed to meet your diverse needs, offering test voltages ranging from 10 V to 15 kV (*model dependent*) and capable of measuring insulation resistances from 0.010 M Ω to 30 T Ω .

Reliability in Every Aspect

Our rugged and weather-resistant Megohmmeters are engineered to be accurate, reliable, and built to perform in any environment. Whether you require a battery-powered, AC-powered, hand-held, hand-cranked, or hard case model, AEMC® Instruments has you covered.

Invest in Confidence

Elevate your insulation testing experience with AEMC® Instruments – *where reliability meets precision, and your equipment's longevity is our priority.* Don't leave the condition of your insulation to chance; choose the trusted solution for accurate and dependable Megohmmeters.

Key Features (*model dependent*)

- Designed to the latest safety standards with safety features such as automatic discharging at the end of a test and live voltage detection
- Data logging to record and store measurement results
- DataView® software for configuration, testing, data retrieval, real-time display, results analysis, and report generation
- True Megohmmeter® (a function unique to AEMC® Instruments) eliminates measurement uncertainties by ensuring a constant test voltage is applied to the sample under test
- Temperature compensation functions to calculate resistance at operating temperatures



MODEL 6529



MODEL 6526



MODEL 6527



MODEL 6536



MODEL 6534



MODEL 6503



MODEL 6505



MODEL 5060



MODEL 5070



(See website
for all models)

Micro-ohmmeters

DataView®

Unlock precision in electrical diagnostics with AEMC® Instruments Micro-Ohmmeters. We recognize the fundamental need for accurate measurement of low and very low electrical resistance values to pinpoint issues in electrical wiring and diagnose the root cause of component or circuit failures. That's why we proudly offer selections of hand-held and benchtop Micro-Ohmmeter models, combining accuracy, ruggedness, and user-friendly design.

Precision at Your Fingertips

Our Micro-Ohmmeters are meticulously crafted to provide you with the tools needed for precise diagnostics. Whether you're dealing with intricate electrical wiring or troubleshooting component failures, our models are not only a powerful diagnostic that is easy to use, enhancing efficiency in every application but also offer unparalleled accuracy and rugged reliability.

Invest in Precision

Elevate your electrical diagnostics with AEMC® Instruments – *where precision meets reliability, and your ability to diagnose and resolve electrical issues is our priority.* Trust in our Micro-Ohmmeters to empower you with the accuracy needed for successful diagnostics and resolution.

Key Features

- Test currents from 1 mA to 200 A
- Perform reliable low and very low electrical resistance tests from 0.1 $\mu\Omega$ to 2500 Ω
- Polarity reversal
- Robust circuitry design allows higher current testing for long periods
- Max test current: 10 A (models 6240 and 6255), 200 A (model 6292)
- Selectable test ranges; one button access to functions
- Data storage and report generation



Oscilloscopes

SX-METRO  

Discover the ultimate in oscilloscope performance with AEMC® Instruments. Obtain the highest precision with our digital hand-held and benchtop oscilloscopes, available in single, isolated dual, and four-channel options. With superior bandwidth, input channels, sample rate, and cutting-edge technology, our oscilloscopes ensure not just accuracy but an experience that goes beyond expectations. Put your trust in us for instruments that not only stand the test of time but also save you valuable time and money.

Key Features (model dependent)

- Simple one-button access to all functions
- Serves as an Oscilloscope, Multimeter, Power and Harmonic Analyzer and Fast Data Logger (Model OX 5042B)
- True channel to channel isolation (two- and four-isolated channel models)
- Testing 12-bit resolution and 2.5 GS/sec speed
- 40, 60, 100 and 300 MHz bandwidths
- Full-color displays that make complex waveforms easy to analyze
- Harmonic analysis, data storage, and Ethernet connections
- Advanced trigger functions (delay and counting modes)
- Built-in communication interfaces including: Wired Ethernet, WiFi, and USB
- Self-calibrating probes upon connection saves time and insures proper operation
- Hand-held and PC models with high storage capacity

Key Applications

- Find cable and LAN wiring faults and the distance to them
- Electronic & Industrial maintenance
- Laboratory & Field troubleshooting



(See website for all models)



Find Quality Products Online at:

 **Valuetesters.com**

info@valuetesters.com



POWERPAD IV
Class A

**POWERPAD®
MODEL 8345**



**POWERPAD®
MODEL 8336**



**POWER & ENERGY LOGGER
MODEL PEL 52**



**POWER & ENERGY LOGGER
MODEL PEL 113**



**POWER & ENERGY LOGGER
MODEL PEL 115**



(See website
for all models)



Power Quality / Energy Analyzers, Meters & Loggers

DataView®



Your Solution for Seamless Power Management!

We understand the crucial role professionals play in troubleshooting and benchmarking power quality issues over time. That's why our user-friendly, rugged, and powerful line of portable power quality analyzers, power and energy loggers, and meters have been designed to improve your power management experience. Additionally, our DataView® software is included to help you display real-time data with ease, configure functions and parameters, and customize views templates and reports to your exact needs.

Why Choose AEMC® Instruments Power Analyzers/Energy Loggers?

- Identify power, quality, and energy waste in your facility effortlessly
- Ensure uninterrupted service and detect intermittent voltage problems
- Prevent costly power issues before they arise
- Record trend, transient, event, and harmonic data simultaneously for efficient issue pinpointing
- Assist in capturing accurate power and energy data for optimum performance and reliability
- Included DataView® software for easy analysis and reporting
- Real-time display for on-site analysis capability
- One-button access to all key measurement functions, eliminating confusion and error
- All necessary probes and accessories included – no guesswork, just convenience.

Our powerful DataView® software is included to provide valuable insights about the performance of your electrical system. The software helps you:

- Display and analyze real-time data
- Configure functions and parameters
- Customize views, templates and reports to your exact needs
- Display waveforms, trend graphs, harmonic spectrums, text summaries, transients, event logs and stored alarms
- Lifetime of free updates

Our instruments support a wide range of applications including:

- Power and electric monitoring
- Utility testing
- Energy management
- Power factor analysis and correction
- Power demand and consumption
- kW measurement
- Industrial power systems
- Commercial maintenance

Power quality analyzers:

- Can test up to 1000 V and 10,000 A (*probe dependent*)
- True RMS single-, two- and three-phase current and voltage measurements
- Real-time display allows on-site analysis capability
- Simultaneously record color waveforms, harmonic analysis, transient capture, and True InRush® data
- Key measurement functions—one button access
- Automatic probe recognition and scaling

Power energy loggers:

- Can test up to 1000 V and 12,000 A (*probe dependent*)
- Single, split, and three phase
- Monitor and record power, energy, cost, and harmonics
- Functions for power and energy data logging for 50, 60, and 400 Hz and DC distribution systems
- Rated 1000 V CAT III, 600 V CAT IV, and 1000 V CAT IV
- Automatic recognition of connected current probes and sensors



Find Quality Products Online at:

Valuetesters.com

info@valuetesters.com

Test and Measurement (Lab) Instruments

AEMC® Instruments power supplies area designed for use in a wide variety of applications. They consistently perform exceptional whether executing the precise needs of an electronic design lab or meeting the demands of continuous operation required on a production test line.

Our laboratory generators are versatile, high performance instruments ideal for education and scientific research as well as electronic product designers in fields such as medical, automotive or consumer electronics and others.

AEMC® Instruments Generators

- Can handle a direct short without damaging the instrument
- Can be configured for each channel to track or add to each other in a leader/follower arrangement
- Has a dedicated 3.5 V_{DC} third channel Advanced Technology

Our power instruments are designed with state-of-the-art linear technology with a highly stable, low noise output - less than 1 mV ripple on each output. Active protection circuitry provides an extra level of insurance against damage from short circuits, overloads, and overheating. Highly efficient toroidal transformers allow these supplies to operate without fans, thus eliminating noise and electromagnetic emissions. Our power supplies are designed for manufacturing, R&D, and education. They offer minimal heat dissipation and low electromagnetic emission while providing continuous duty cycle at full rated output.

Resistance Decade Box

- 7 decades covering a range from 1 Ω to 11.11111 M Ω
- 11 position switches
- Accuracy 1% \pm 10 m Ω on all ranges

DC Power Sup

- Single, dual, and triple output modes
- Designed around high efficient toroidal transformers: no fans and low electromagnetic emission
- Continuous duty cycle at full rated output
- (0 to 30) V_{DC}; (0 to 2.5) A
- Simultaneous display of voltage and current
- Leader/Follower tracking with quick and easy setup



DC POWER SUPPLY
MODEL AX503



RESISTANCE DECADE BOX
MODEL BR07



Thermal Imaging Camera

CAMReport®  

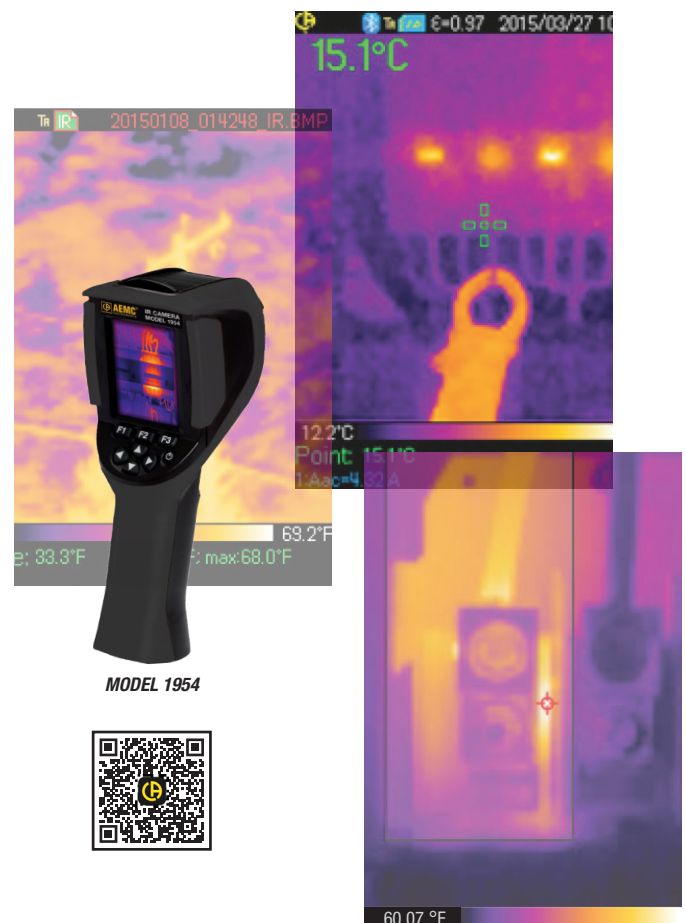
AEMC® Instruments easy-to-use and cost-effective infrared thermal camera takes all the mystery out of effective thermal imaging. It includes a touch screen display and audio dictation. Bluetooth® communication supports acquisition of data from up to three peripheral devices such as clamp meters and DMMs. Our camera is equipped with infrared thermography detection technology that has become an indispensable means ensuring safety in industrial production.

They are used in sectors of industry as diverse as metallurgy and steel-making, electric power, petroleum, automation, the exploitation of natural gas, and transportation, and in other committed professions such as fire-fighting and border surveillance.

Infrared thermal imaging provides a real-time non-contact inspection method. This detection method does not require you to shut off power, shut down the machines or interrupt production. It can diagnose latent malfunctions in advance, and so forestall their occurrence and prevent production incidents. Thermal imaging is an innovative non-contact evaluation technique that is safe, reliable, and rapid.

Key Features

- Measures from (4 to 482) °F (-20 to 250) °C
- Focus-free capability with (28 x 38) ° field of view
- Startup and operational in less than 10 seconds
- Displays/captures real/thermal images simultaneously
- Exceptional 13-hour battery life
- Configure emissivity table, cursor and trigger functions
- Record comments onto image w/ included BT headset
- Record and store user configurations



MODEL 1954



Find Quality Products Online at:



info@valuetesters.com

Transformer Ratiometer

DataView®

The Digital Transformer Ratiometer DTR® 8511 takes the proven reliability of the DTR® 8510 and elevates it with a range of enhancements. While maintaining the fully automatic VT/PT and CT testing functions that technicians trust for accurate ratio and excitation current measurements, the DTR® 8511 delivers a lighter, more ergonomic design with advanced safety features built in. A brighter, larger display improves visibility in any environment, while an oversized test button allows for easy operation.

Why Choose the DTR® 8511?

- **Wide Ratio Range**
Accurately measure transformer ratios up to 8000:1 for VT/PTs and 1000:1 for CTs.
- **High Precision**
Advanced low-voltage step-down technology ensures repeatable, reliable results.
- **Automatic Testing**
Fully automatic cycles check for lead reversal and open circuits—no manual balancing required.
- **Built-In Continuity & Deviation Checks**
Instantly compare measured values to stored nameplate data for clear pass/fail results.
- **Rugged & Field-Ready**
Lightweight IP53-rated design with a bright backlit display and oversized test button for easy use—even with gloves.
- **Flexible Power Options**
Operates on rechargeable NiMH batteries, USB-C, or 12 Vdc supply.
- **Large Storage Capacity**
Save up to 9,801 test results for recall and reporting.
- **Seamless Data Management & Connectivity**
Connect directly to your PC via the isolated USB interface to manage results, configure nameplate values, and generate professional reports with the included DataView® software and DTR® Control Panel.

How does the DTR® 8511 Improve on the 8510?

- **Improved Test Performance**
Matches the same ratio and accuracy ranges as the DTR® 8510, but with improved test power. It delivers fixed test voltages (30 Vac for VT/PT, 5 V for CT), and uses a 64 Hz test frequency for a more accurate field simulation. Additional enhancements include advanced continuity checks and improved diagnostics.
- **Smarter Data Storage and Memory**
Both models can store up to 99 objects with 99 tests each. With the older DTR® 8510, nameplate values can only be edited through DataView®. The DTR® 8511 improves flexibility by offering 10 fixed nameplate ratios plus one customizable ratio, editable directly from the instrument or via software. It also supports manual, automatic, or no-save testing modes for greater control and efficiency.



DTR® MODEL 8511

Accessories

Our range of accessories cover a spectrum of applications, from multimeters and oscilloscope probes to power analyzers and thermal imaging cameras. Plus, our accessories are engineered with the highest industry standards, ensuring that you can conduct tests confidently, knowing that you and your equipment are protected. No matter the complexity of your electrical setup, we've got the right tool and accessory to streamline your testing processes. *All accessories are available on our website!*



ADAPTER - 600 V CAT III POWER
TO PHASE ADAPTER FOR USE WITH
MODELS PEL 112 & PEL 113



ADAPTER - BANANA (FEMALE) -
BNC (MALE) (XM-BB) FOR USE WITH
AMPFLEX SENSORS, MODELS K100/
K110 AND SLII DATA LOGGERS



REPLACEMENT LEADS WITH CLIPS
FOR MODELS 6608 & 6609



MINIFLEX® SENSOR
MODEL MA193-10-BK FOR MODELS
3945-B, 8220, 8230, 8333, 8335,
8336, 8345, 8435 & PEL SERIES



AMPFLEX® SENSOR
MODEL 196A-24-BK
FOR MODELS 8435, 8436 & PEL 115



17" STAINLESS STEEL T-SHAPED
AUXILIARY GROUND ELECTRODES



CARRYING POUCH FOR CABLE
TESTERS, MEGOHMMETERS,
MULTIMETERS, ETC.



(See website for
all accessories)

Training Seminars & Webinars

AEMC® Instruments offers a variety of comprehensive in-person or virtual training seminars.

- Understanding Ground Resistance Testing
- Understanding Insulation Resistance Testing
- Understanding Power Quality Measurements
- Offered throughout USA and Canada
- Public and private seminars available
- On-site or online training seminars
- Custom product training solutions available
(contact us for more details!)



UNDERSTANDING GROUND RESISTANCE TESTING



For field engineers, technicians, utility engineers, supervisors, electricians and inspectors interested in testing and grounding systems.

Key topics include:

- Soil resistivity
- Bond resistance
- Ground resistance
- 3 and 4 Point Fall-of-Potential testing
- Clamp-on testing
- Alternate test methods
- NEC 250 requirements, NFPA 780 Lightning Protection Standards, and IEEE standards
- Continuity testing in common ground systems required by multiple standards
- Create plots and reports

UNDERSTANDING INSULATION RESISTANCE TESTING

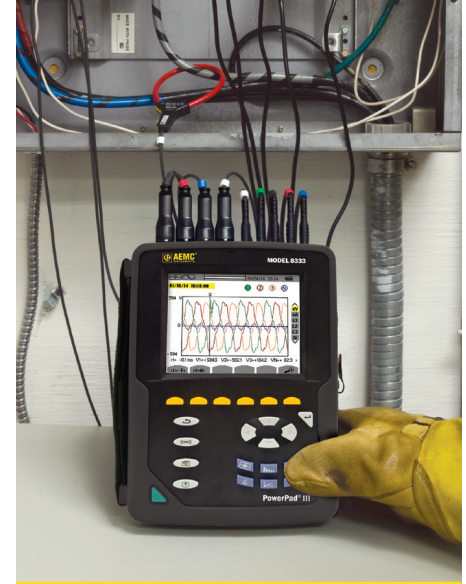


For technicians, supervisors, electricians, plant maintenance personnel and inspectors interested in insulation resistance testing on motors, cables, transformers and other electrical equipment.

Key topics include:

- Insulation test theory
- Insulation testing on motors, cables, and transformers
- Spot testing
- Timed testing
- DAR (Dielectric Absorption Ratio), PI (Polarization Index), DD (Dielectric Discharge)
- Temperature correction
- Report generation

UNDERSTANDING POWER QUALITY MEASUREMENTS



For engineers, technicians, supervisors, electricians, plant maintenance personnel and inspectors interested in monitoring, recording and analyzing power quality and energy monitoring.

Key topics include:

- Symptoms and problems associated with poor Power Quality
- Measuring common voltage disturbances and transients
- Harmonic Analysis - causes and how to measure harmonics
- Grounding and bonding issues and their relationship with Power Quality
- Power Factor - measuring and understanding its importance to power quality
- How to create a PQ monitoring plan and select the proper measurement
- IEEE standards discussed in depth
- Report generation



Find Quality Products Online at:



info@valuetesters.com



Family of Products

Engineered for Excellence
BUILT TO LAST™