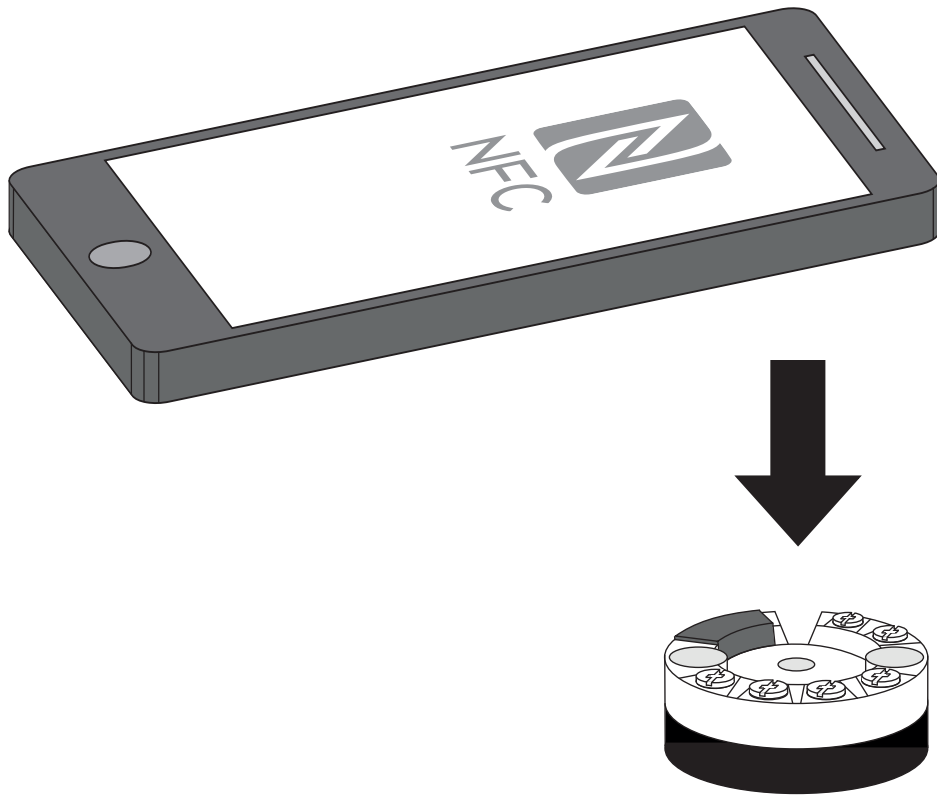


# NFC™ Quick Start Guide

- APAQ 130
- IPAQ 330
- IPAQ 530



## NFC™ Quick Start Guide

NFC™ (near field communication) is a method for wireless exchange of data over short distances between two electronic devices. NFC™ is integrated in most smartphones / tablets and in some of INOR's products. With this technology it is possible to wirelessly configure your transmitter.

Here is a quick guide to get you started.

1. Download the app INOR Connect.



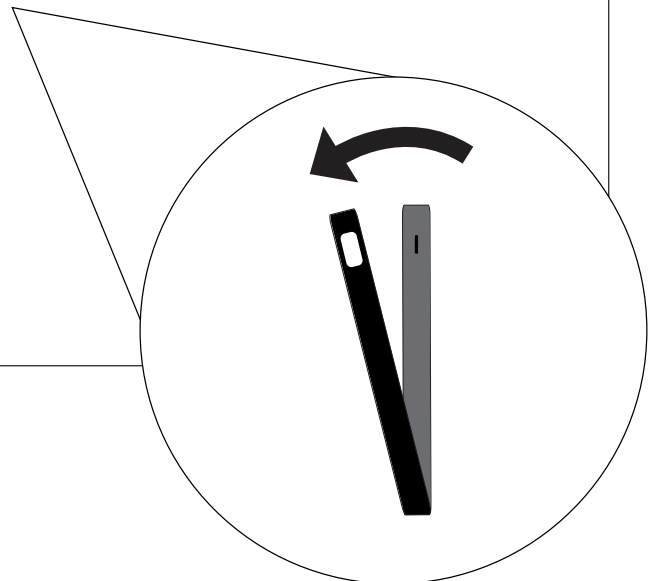
2. Make sure NFC™ is turned on on the smartphone.



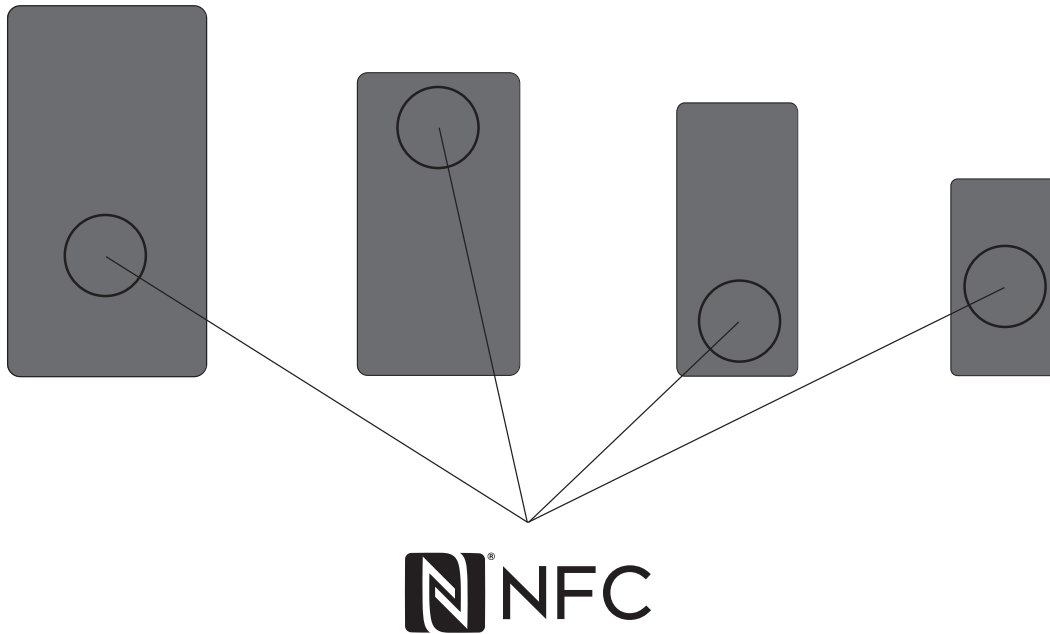
- 3.



{Remove smartphone case}

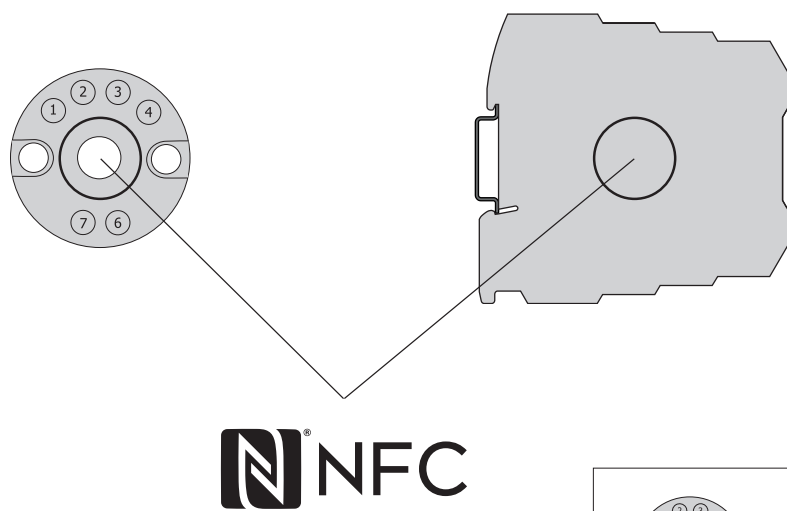


4.

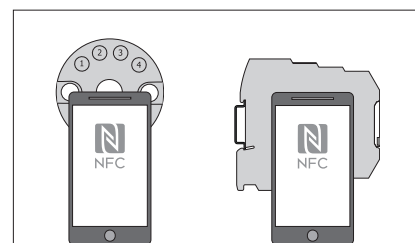


{NFC™ is located in different places on different models of smartphone}

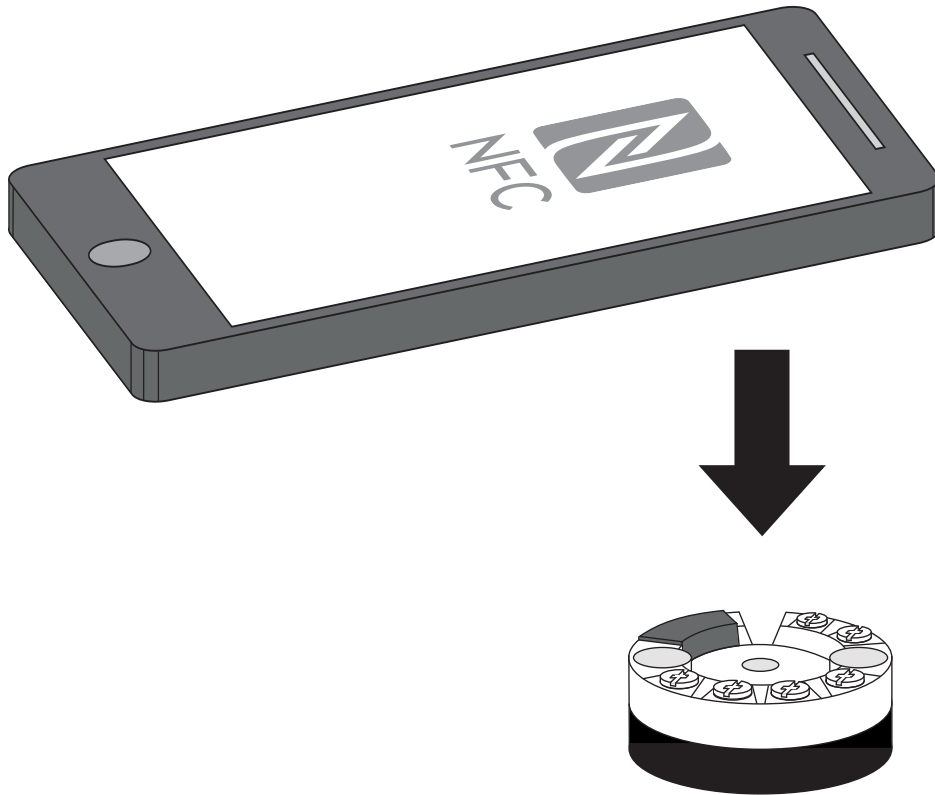
5.



{NFC™ is located in the middle of INOR transmitters}



6.



{NFC™ works best 2 cm or less between the two devices}

#### 7. Configure the transmitter in three easy steps

1. Read the configuration of the transmitter
2. Configure your transmitter through the user friendly interface
3. Write the configuration to the transmitter