

LogTag®

HUMIDITY & TEMPERATURE RECORDER

HAXO-8 QUICK SETUP GUIDE



WHAT HARDWARE DO YOU NEED?

- LogTag® HAXO-8 Humidity and Temperature recorder.
- LogTag® LTI/USB Interface Cradle.
- PC running Windows XP or later version.

WHAT ABOUT SOFTWARE?

Before using a LogTag® recorder you will need to download the LogTag® Analyzer software from

After registering you can download the latest version, which supports multiple languages, including those with special characters such as Chinese or Russian. After completion a new icon will appear on your desktop.

INSTALLING THE INTERFACE CRADLE

- Plug the Interface Cradle into a USB port.
- USB drivers will install automatically. Your operating system will inform you when installation is complete.

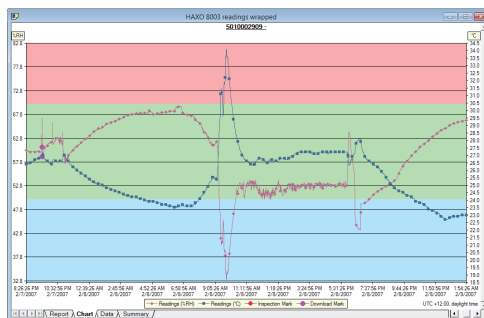


CONFIGURING THE HAXO-8

The HAXO-8 must be configured before you can take readings.

- Start the LogTag Analyzer software.
- Insert the HAXO-8 into the Interface Cradle with the blue label to the front. You will here a click as the contacts engage.
- The screen will show 'A new LogTag has been detected..... Please wait.....'.
- If a Recorder has been used previously, a chart will appear.
- Select 'LogTag' - 'Wizard' to bring up the configuration wizard. The 'Welcome and general instructions' will be displayed.
- Click on 'Next'; LogTag Analyzer will scan for a Recorder, once found the configuration options will be displayed.

The screenshot shows the 'LogTag Configure' window. It has tabs for 'Humidity' and 'Temperature'. Under 'Humidity', it shows 'Readings below 25 or above 70 %RH'. Under 'Temperature', it shows 'Readings below 15 or above 25 °C'. There are checkboxes for 'Enable the Alert (Red) indicator', 'Enable the OK (Green) indicator', 'Clear and reset when START MARK button pressed', 'Configure requires a password', and 'Download requires a password'. The 'Start/Mark' button is highlighted.



GETTING HELP

If after studying the 'HAXO Quick setup guide' you still need further information, please visit the support section of the LogTag Recorders

CONFIGURATION OPTIONS

- User ID - user can enter details about each recorder.
 - Select Push button start or Date/Time start depending on requirements.
 - Enter the start date and time if selected.
 - If you selected Push button start, you can also tick **Enable pre-start logging**. This function ensures readings are taken in case the user forgets to press the START button.
 - Select recording mode - **Continuously** (overwrites old readings when memory is full) or reading for a specific duration (note that changing the recording interval automatically re-calculates the recording time).
 - Enter a start delay if required (allows the recorder to stabilise before recording starts).
 - Tick the **Enable the OK (Green) indicator** (this shows that the LogTag® is recording).
 - Click on the **Humidity** tab and select or enter humidity alert parameters.
 - Click on the **Temperature** tab and select or enter temperature alert parameters.
 - If you wish to control future access to this recorder, tick **Configure requires a password** or **Download requires a password** and enter a password. On some HAXO-8 units you need to perform an upgrade step to access this functionality. NOTE: Passwords are case sensitive.
 - Click **Next** and the recorder will be configured.
 - When the configuration is complete, remove the LogTag® from the interface cradle.
 - If you wish to configure more HAXO-8 units with the same configuration profile, insert the next recorder into the interface cradle and click **Again**.
- NOTE: It is recommended that all HAXO-8 units be either hung or mounted vertically from the lug to minimise the possibility of water pooling over the sensor (especially in high humidity environments).

DOWNLOADING DATA

- Start LogTag Analyzer software.
- Insert the HAXO-8 into the interface cradle.
- The screen will show 'A new LogTag has been detected..... Please wait.....'.
- After a few seconds, a chart will appear (see image).
- Data can be displayed in Report, Chart, Table or Summary formats by clicking the tabs at the bottom of the window.
- Data can also be saved in a number of formats including TXT, PDF, HTML and CSV for import into a spreadsheet program.